

**TAMPA-HILLSBOROUGH  
EXPRESSWAY AUTHORITY**

**CONTRACT PLANS**

TASK WORK ORDER #3

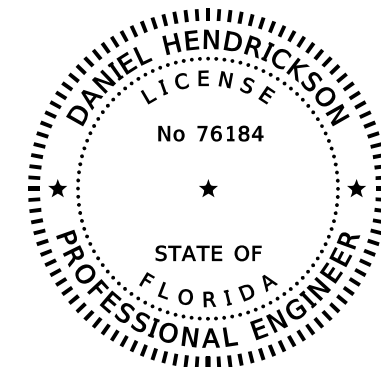
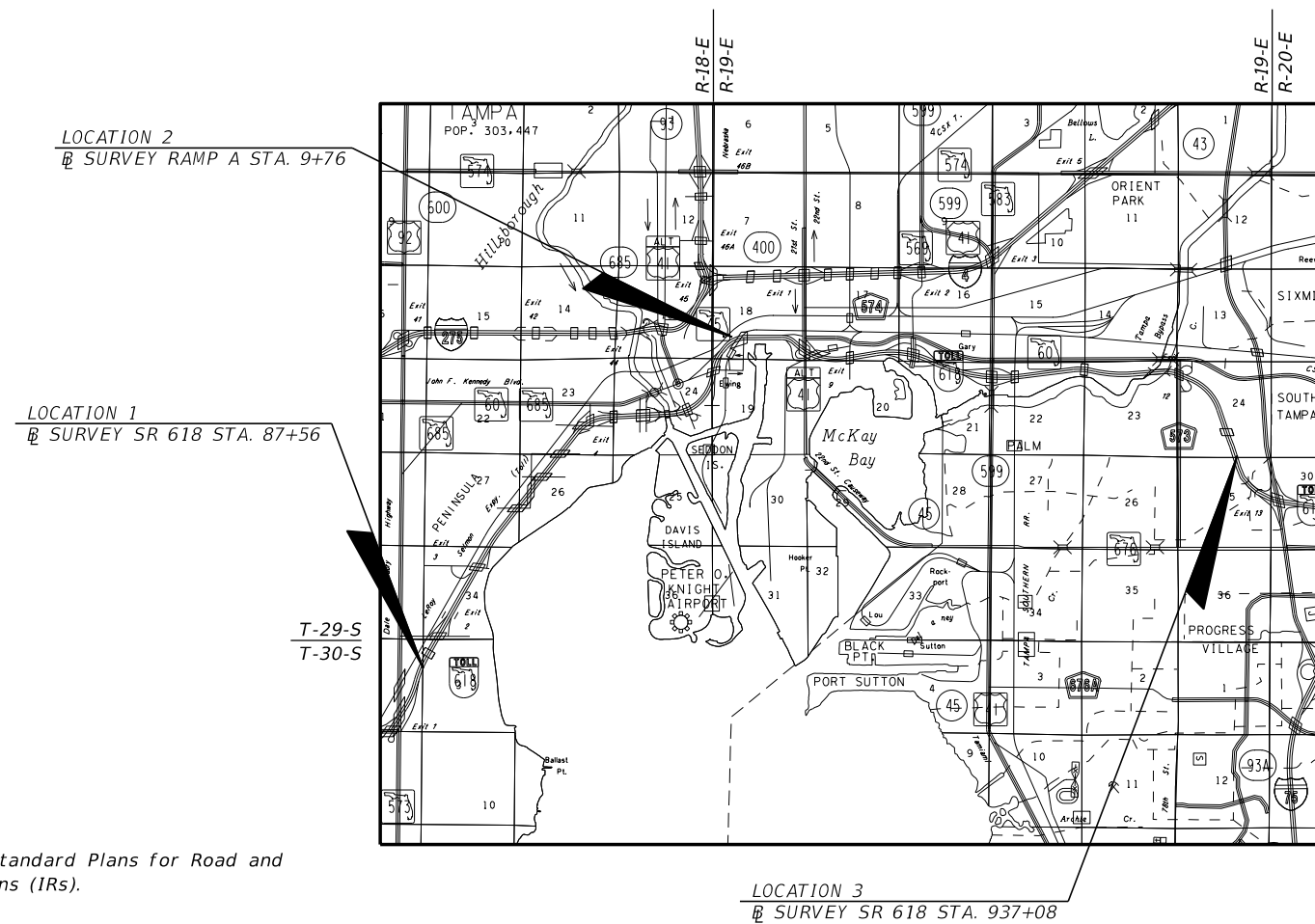
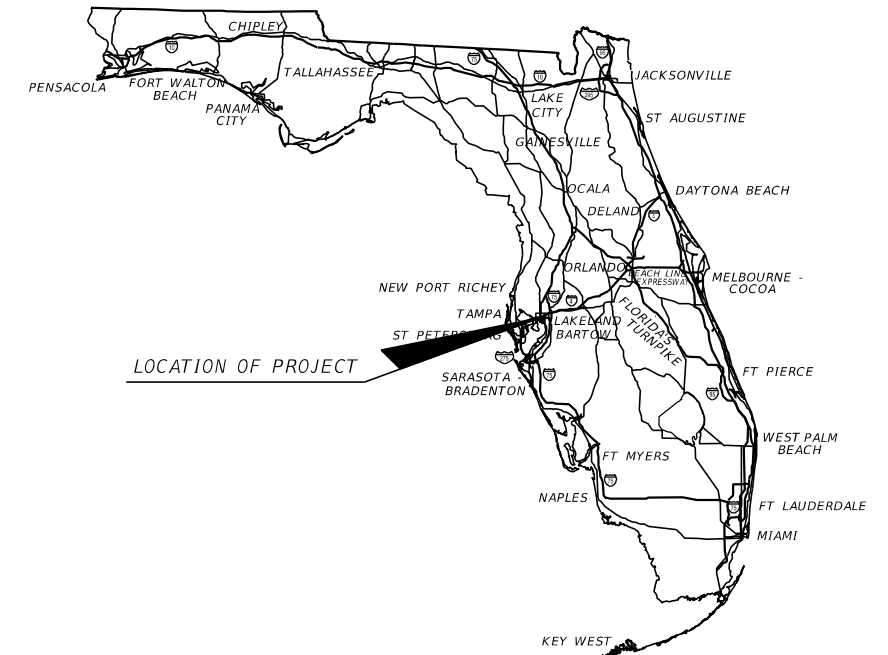
HILLSBOROUGH COUNTY (10002)

STATE ROAD NO. 618

**INTEROPERABILITY SIGNING PLANS**

**INDEX OF SIGNING PLANS**

SHEET NO.	SHEET DESCRIPTION
1	KEY SHEET
2	SUMMARY OF PAY ITEMS & GENERAL NOTES
3 TO 5	PROJECT LAYOUT
6	PROJECT CONTROL
7 TO 9	SIGNING PLAN
10	GUIDE SIGN WORKSHEET
11 TO 12	SIGN CROSS SECTIONS



THIS ITEM HAS BEEN DIGITALLY SIGNED AND SEALED BY:

ON THE DATE ADJACENT TO THE SEAL  
PRINTED COPIES OF THIS DOCUMENT ARE NOT CONSIDERED SIGNED AND SEALED AND THE SIGNATURE MUST BE VERIFIED ON ANY ELECTRONIC COPIES.

**SIGNING PLANS  
ENGINEER OF RECORD:**

DANIEL HENDRICKSON, P.E. NO.: 76184  
BURGESS & NIPLE, INC.  
10006 N. DALE MABRY HIGHWAY, SUITE 201  
TAMPA, FLORIDA 33618  
CONTRACT NO.: 0-00619-ICG  
VENDOR NO.: 310885550

**THEA PROJECT MANAGER:**  
JAMES E. DRAPP

**GOVERNING STANDARD PLANS:**  
Florida Department of Transportation, FY2021-22 Standard Plans for Road and Bridge Construction and applicable Interim Revisions (IRs).  
  
Standard Plans for Road Construction and associated IRs are available at the following website: <http://www.fdot.gov/design/standardplans>

**GOVERNING STANDARD SPECIFICATIONS:**  
Florida Department of Transportation, July 2021 Standard Specifications for Road and Bridge Construction at the following website: <http://www.fdot.gov/programmanagement/Implemented/SpecBooks>

CONSTRUCTION CONTRACT NO.	FISCAL YEAR	SHEET NO.
TBD	21	1

THE OFFICIAL RECORD OF THIS SHEET IS THE ELECTRONIC FILE DIGITALLY SIGNED AND SEALED UNDER RULE 61G15-23.004, F.A.C.

SIGN PLACEMENT AND INSTALLATION:

1. BASELINE AND PROJECT LAYOUT ARE FOR REFERENCE PURPOSES ONLY.
2. HAND DIG OR VACUUM EXCAVATE THE FIRST FOUR FEET OF SIGN FOUNDATIONS.
3. REMOVE OR CUT VEGETATION AS NEEDED TO PROVIDE ADEQUATE SIGHT DISTANCE FOR ALL GROUND MOUNTED SIGNS. VEGETATION REMOVAL AND TRIMMING IS INCLUDED IN THE UNIT PRICE OF THE SIGN ASSEMBLY. DO NOT ALTER VEGETATION WITHOUT PRIOR APPROVAL FROM THE ENGINEER.
4. NOTIFY THE ENGINEER IF SOIL CONDITIONS IN THE FIELD DO NOT MATCH THE ASSUMED SOIL PROPERTIES USED IN THE MULTIPOST SIGN CALCULATIONS.

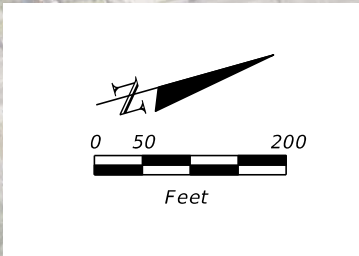
SIGN PANELS/FACES:

5. UTILIZE THE FOLLOWING FDOT STANDARD PLAN INDEXES FOR INSTALLATION AND LOCATION OF SINGLE AND MULTI COLUMN GROUND MOUNTED SIGNS: 700-010, 700-020, 700-101
6. DETAILS FOR THE SIGN LOGOS CAN BE FOUND IN THE TRAFFIC GUIDE DRAWINGS ON THE FLORIDA'S TURNPIKE WEBSITE:  
<https://floridasturnpike.com/business-opportunities/design/turnpike-design-handbook/#1579631552518-9a0a20aa-e4cd>
7. ENSURE THE OUTSIDE CORNER OF THE SIGN IS CONCENTRIC WITH THE BORDER, ENSURE BLACK BORDERS ARE RECESSED FROM THE EDGE OF THE SIGN.

**SUMMARY OF PAY ITEMS - SIGNING**

PAY ITEM NO.	PAY ITEM DESCRIPTION	UNIT	QUANTITY	
			PLAN	FINAL
700-1-50	SINGLE POST SIGN, RELOCATE	AS	1	
700-2-17	MULTI-POST SIGN, F&I GROUND MOUNT, 201-300 SF	AS	3	

REVISIONS				DANIEL HENDRICKSON, P.E. P.E. LICENSE NUMBER 76184 BURGESS & NIPLE, INC. 10006 N. DALE MABRY HIGHWAY, SUITE 201 TAMPA, FL 33618	TAMPA-HILLSBOROUGH EXPRESSWAY AUTHORITY			<b>SUMMARY OF PAY ITEMS                      &amp; GENERAL NOTES</b>	SHEET NO.
DATE	DESCRIPTION	DATE	DESCRIPTION		ROAD NO.	COUNTY	CONTRACT NUMBER		
					618	HILLSBOROUGH	0-00619-ICG		2



SIGNING PLAN (1)  
 LOCATION 1  
 APPROX. 705' SOUTH OF  
 HIMES AVE. BRIDGE SLAB

REVISIONS	
DATE	DESCRIPTION

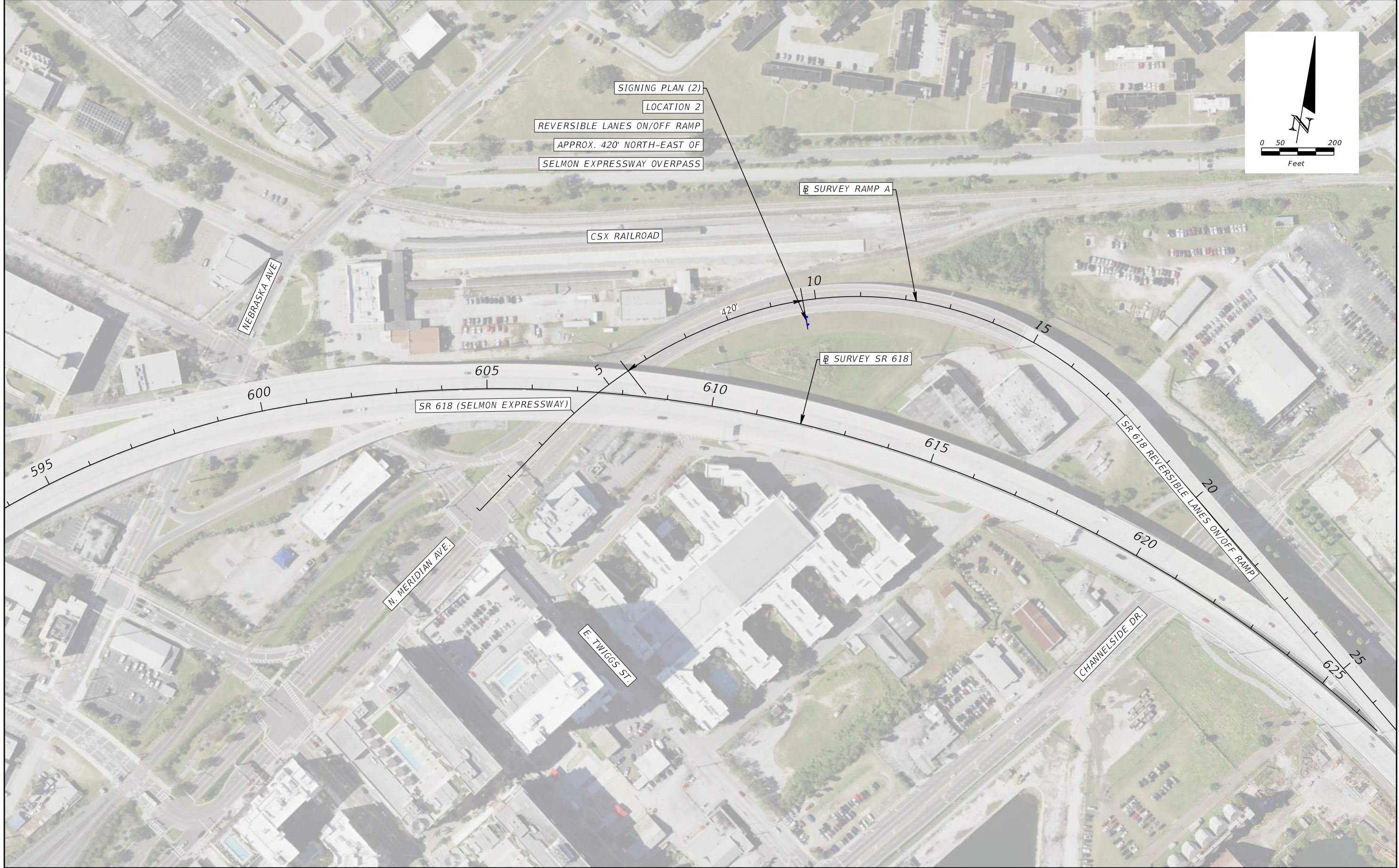
DANIEL HENDRICKSON, P.E.  
 P.E. LICENSE NUMBER 76184  
 BURGESS & NIPLE, INC.  
 10006 N. DALE MABRY HIGHWAY, SUITE 201  
 TAMPA, FL 33618

TAMPA-HILLSBOROUGH EXPRESSWAY AUTHORITY		
ROAD NO.	COUNTY	CONTRACT NUMBER
618	HILLSBOROUGH	0-00619-ICG

**PROJECT LAYOUT (1)**

SHEET NO.  
 3

THE OFFICIAL RECORD OF THIS SHEET IS THE ELECTRONIC FILE DIGITALLY SIGNED AND SEALED UNDER RULE 61G15-23.004, F.A.C.



REVISIONS	
DATE	DESCRIPTION

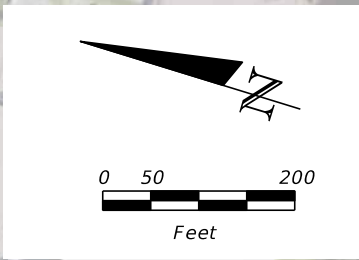
DANIEL HENDRICKSON, P.E.  
P.E. LICENSE NUMBER 76184  
BURGESS & NIPLE, INC.  
10006 N. DALE MABRY HIGHWAY, SUITE 201  
TAMPA, FL 33618

TAMPA-HILLSBOROUGH EXPRESSWAY AUTHORITY		
ROAD NO.	COUNTY	CONTRACT NUMBER
618	HILLSBOROUGH	0-00619-ICG

**PROJECT LAYOUT (2)**

SHEET NO.  
4

THE OFFICIAL RECORD OF THIS SHEET IS THE ELECTRONIC FILE DIGITALLY SIGNED AND SEALED UNDER RULE 61G15-23.004, F.A.C.



REVISIONS			
DATE	DESCRIPTION	DATE	DESCRIPTION

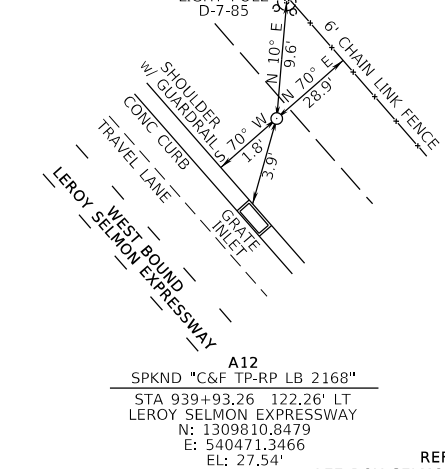
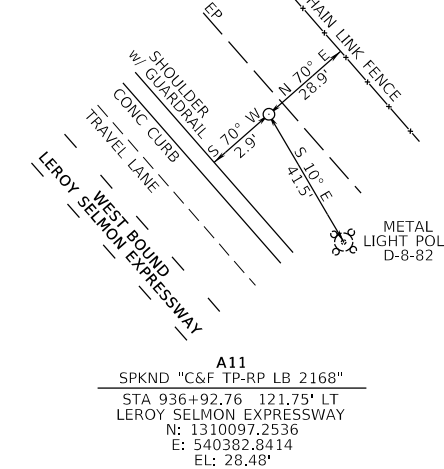
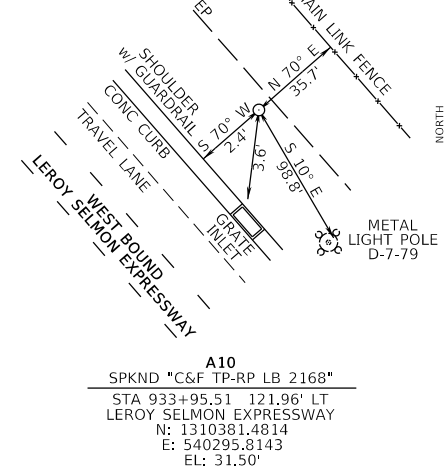
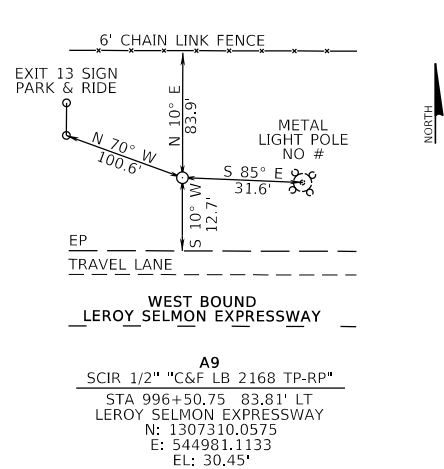
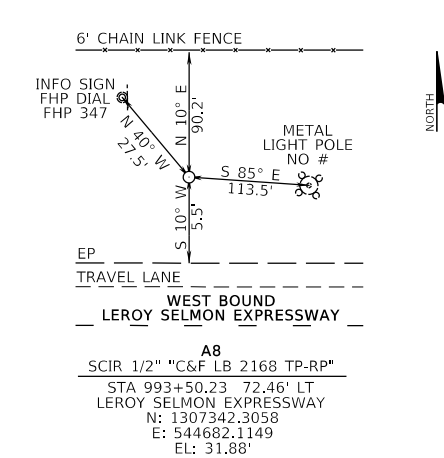
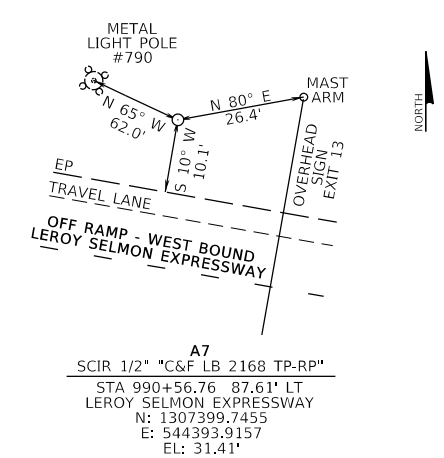
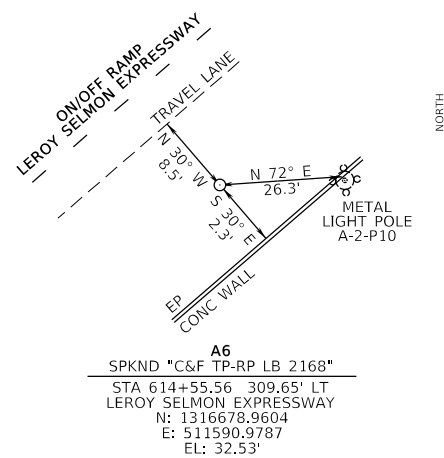
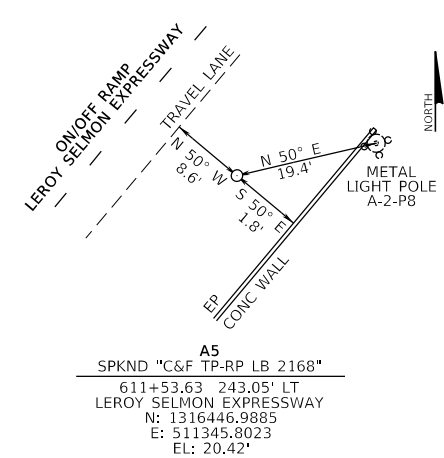
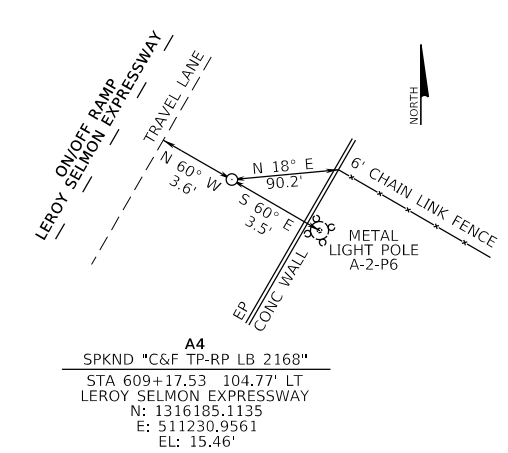
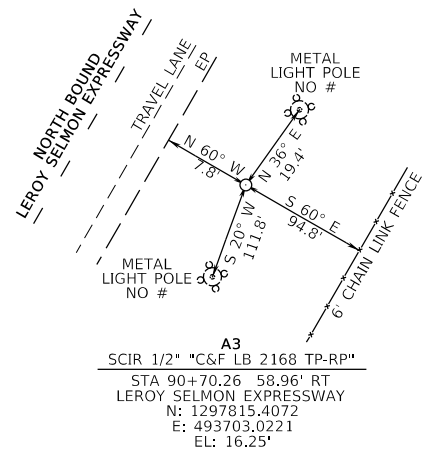
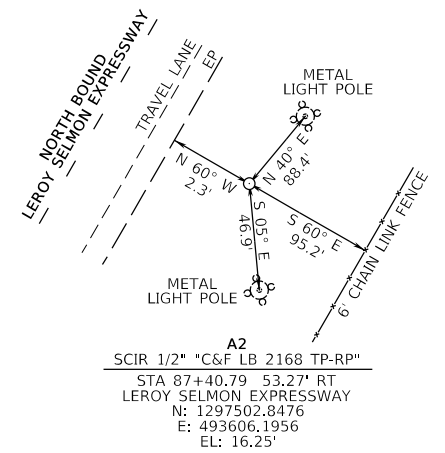
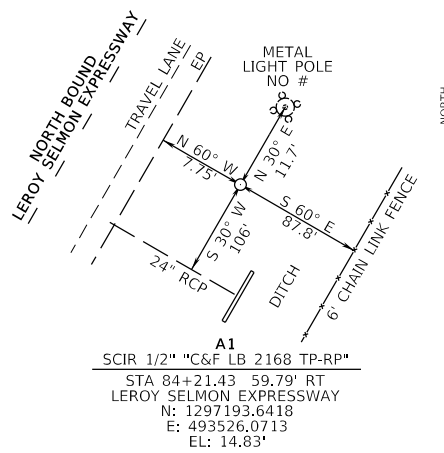
DANIEL HENDRICKSON, P.E.  
 P.E. LICENSE NUMBER 76184  
 BURGESS & NIPLE, INC.  
 10006 N. DALE MABRY HIGHWAY, SUITE 201  
 TAMPA, FL 33618

TAMPA-HILLSBOROUGH EXPRESSWAY AUTHORITY		
ROAD NO.	COUNTY	CONTRACT NUMBER
618	HILLSBOROUGH	0-00619-ICG

**PROJECT LAYOUT (3)**

SHEET NO.  
5

THE OFFICIAL RECORD OF THIS SHEET IS THE ELECTRONIC FILE DIGITALLY SIGNED AND SEALED UNDER RULE 61G15-23.004, F.A.C.

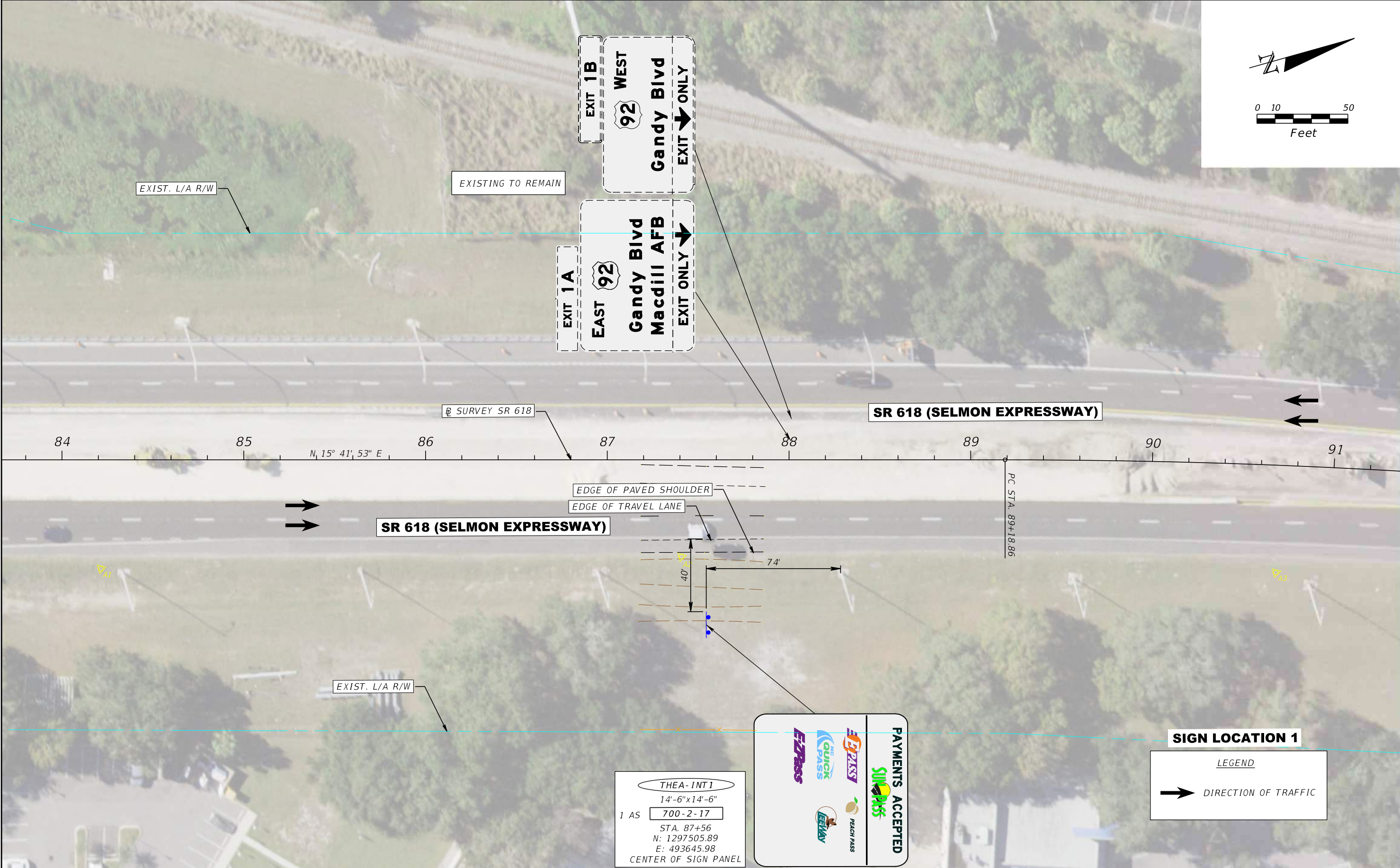
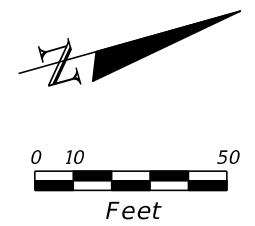


REFERENCE SHEET  
 LEE ROY SELMON EXPRESSWAY

SURVEY PERFORMED BY:  
 CUMBEY & FAIR, INC.  
 2463 ENTERPRISE RD.  
 CLEARWATER, FL 33763

REVISIONS				DANIEL HENDRICKSON, P.E. P.E. LICENSE NUMBER 76184 BURGESS & NIPLE, INC. 10006 N. DALE MABRY HIGHWAY, SUITE 201 TAMPA, FL 33618	TAMPA-HILLSBOROUGH EXPRESSWAY AUTHORITY			SHEET NO.  6
DATE	DESCRIPTION	DATE	DESCRIPTION		ROAD NO.	COUNTY	CONTRACT NUMBER	
					618	HILLSBOROUGH	0-00619-ICG	

THE OFFICIAL RECORD OF THIS SHEET IS THE ELECTRONIC FILE DIGITALLY SIGNED AND SEALED UNDER RULE 61G15-23.004, F.A.C.



THEA-INT1  
 14'-6" x 14'-6"  
 1 AS 700-2-17  
 STA. 87+56  
 N: 1297505.89  
 E: 493645.98  
 CENTER OF SIGN PANEL



**SIGN LOCATION 1**

LEGEND

➔ DIRECTION OF TRAFFIC

REVISIONS			
DATE	DESCRIPTION	DATE	DESCRIPTION

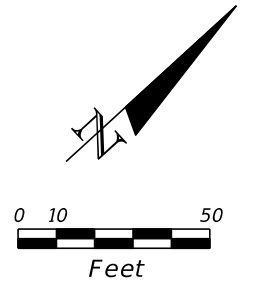
DANIEL HENDRICKSON, P.E.  
 P.E. LICENSE NUMBER 76184  
 BURGESS & NIPLE, INC.  
 10006 N. DALE MABRY HIGHWAY, SUITE 201  
 TAMPA, FL 33618

TAMPA-HILLSBOROUGH EXPRESSWAY AUTHORITY		
ROAD NO.	COUNTY	CONTRACT NUMBER
618	HILLSBOROUGH	0-00619-ICG

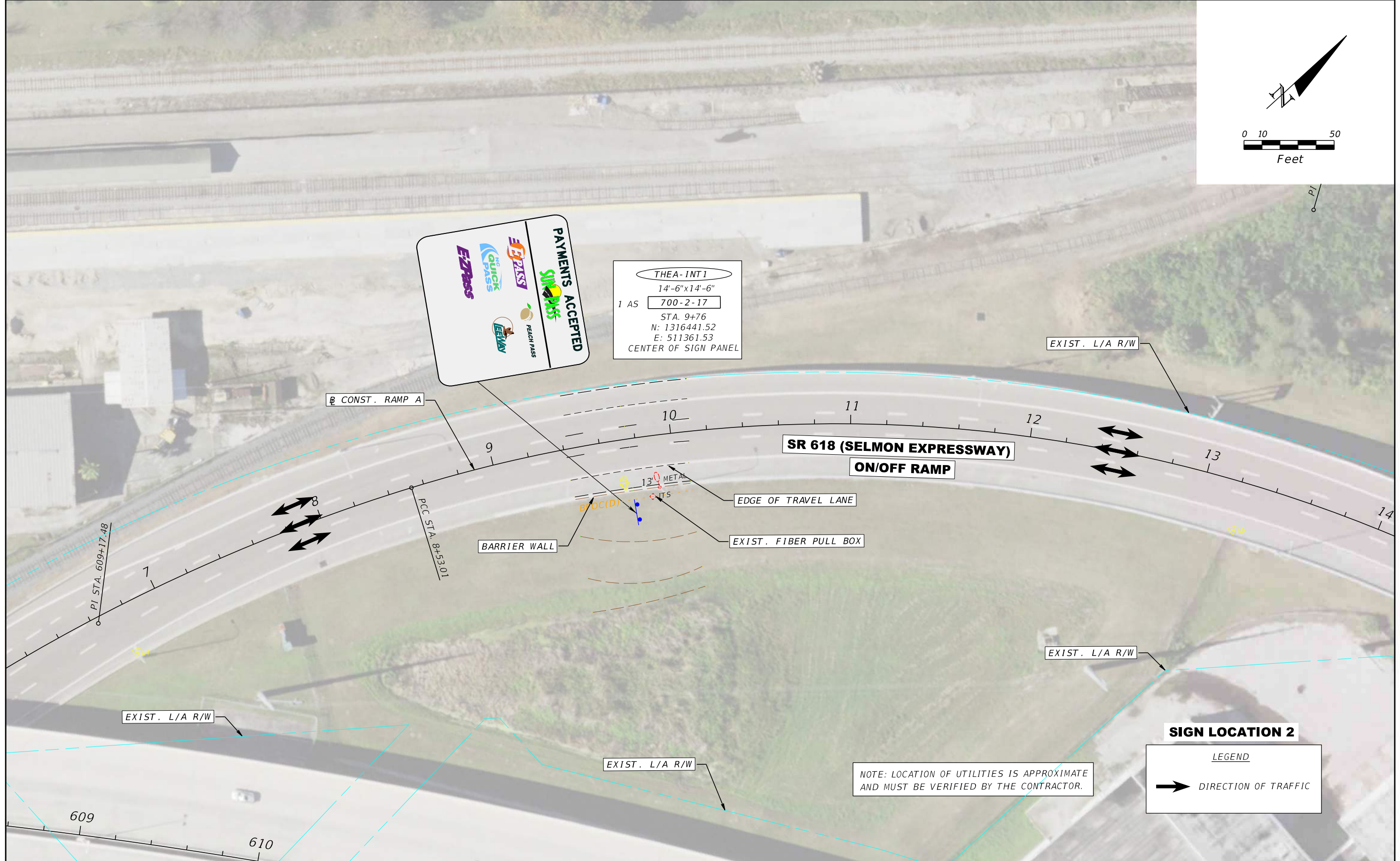
*SIGNING PLAN (1)*

SHEET NO.  
 7

THE OFFICIAL RECORD OF THIS SHEET IS THE ELECTRONIC FILE DIGITALLY SIGNED AND SEALED UNDER RULE 61G15-23.004, F.A.C.



THEA-INT1  
 14'-6" x 14'-6"  
 I AS 700-2-17  
 STA. 9+76  
 N: 1316441.52  
 E: 511361.53  
 CENTER OF SIGN PANEL



EXIST. L/A R/W

SR 618 (SELMON EXPRESSWAY)  
 ON/OFF RAMP

EDGE OF TRAVEL LANE

EXIST. FIBER PULL BOX

BARRIER WALL

EXIST. L/A R/W

EXIST. L/A R/W

EXIST. L/A R/W

**SIGN LOCATION 2**

LEGEND

➔ DIRECTION OF TRAFFIC

NOTE: LOCATION OF UTILITIES IS APPROXIMATE AND MUST BE VERIFIED BY THE CONTRACTOR.

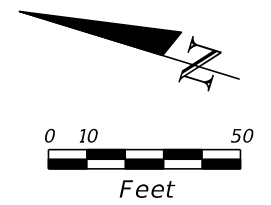
REVISIONS			
DATE	DESCRIPTION	DATE	DESCRIPTION

DANIEL HENDRICKSON, P.E.  
 P.E. LICENSE NUMBER 76184  
 BURGESS & NIPLE, INC.  
 10006 N. DALE MABRY HIGHWAY, SUITE 201  
 TAMPA, FL 33618

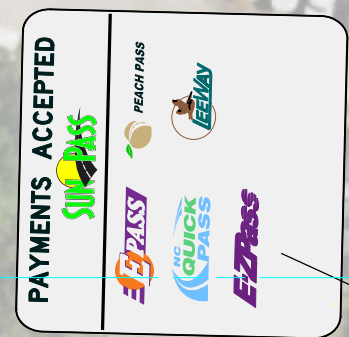
TAMPA-HILLSBOROUGH EXPRESSWAY AUTHORITY		
ROAD NO.	COUNTY	CONTRACT NUMBER
618	HILLSBOROUGH	0-00619-ICG

**SIGNING PLAN (2)**

SHEET NO.  
 8



THEA-INT1  
 14'-6" x 14'-6"  
 1 AS 700-2-17  
 STA. 937+08  
 N: 1310084.75  
 E: 540395.61  
 CENTER OF SIGN PANEL



APPROX. 26.5' FROM  
 LIGHT POLE D-8-82

EDGE OF TRAVEL LANE

GUARDRAIL

SR 618 (SELMON EXPRESSWAY)

SR 618 REVERSIBLE LANES

SR SURVEY SR 618

932      933      934      935      936      937      938      939

SR 618 (SELMON EXPRESSWAY)

EXIST. L/A R/W

EXIST. L/A R/W



1 AS 700-1-50  
 STA. 933+08  
 N: 1310464.74  
 E: 540272.41  
 CENTER OF SIGN PANEL

**SIGN LOCATION 3**

LEGEND

→ DIRECTION OF TRAFFIC

REVISIONS			
DATE	DESCRIPTION	DATE	DESCRIPTION

DANIEL HENDRICKSON, P.E.  
 P.E. LICENSE NUMBER 76184  
 BURGESS & NIPLE, INC.  
 10006 N. DALE MABRY HIGHWAY, SUITE 201  
 TAMPA, FL 33618

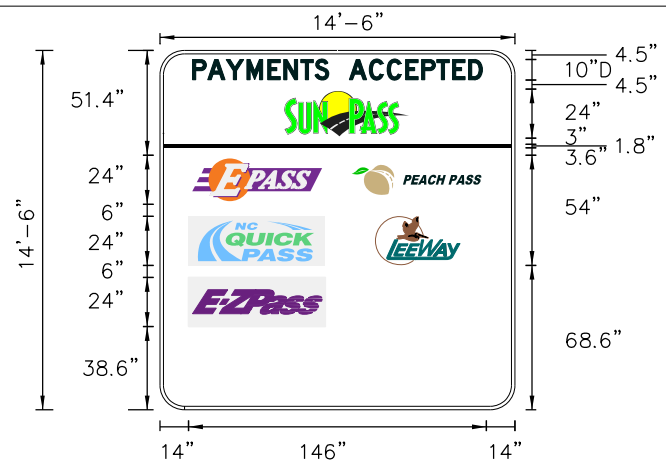
TAMPA-HILLSBOROUGH EXPRESSWAY AUTHORITY		
ROAD NO.	COUNTY	CONTRACT NUMBER
618	HILLSBOROUGH	0-00619-ICG

**SIGNING PLAN (3)**

SHEET NO. 9

THE OFFICIAL RECORD OF THIS SHEET IS THE ELECTRONIC FILE DIGITALLY SIGNED AND SEALED UNDER RULE 61G15-23.004, F.A.C.

SIGN NAME	THEA-INTI	QTY	SIGN NUMBER	STATION(S)	
PANEL	BORDER	1	87+56		
WIDTH	14'-6"	WIDTH	1.75"	2	
HEIGHT	14'-6"	RADII	12"	3	
LEGEND	Black	COLOR	Black		
COLOR	White				
SYMBOL(S)	ANGLE	X	Y	WID	HT
SunPass	0	57.4	131	67	24
Epass	0	14	98.1	67	24
PeachPass	0	93	98.6	67	24
QuickPass	0	14	68.6	67	24
LeeWay	0	93	68.6	67	24
EZPass	0	14	38.6	67	24
SIGN NUMBER	NUMBER OF POSTS	CLEARANCE Edge Of Land	COLUMN SIZE	LENGTH AVERAGE	
1	2	40'-0"	WIOX33	23.40'	
2	2	16'-11"	WIOX33	25.03'	
3	2	14'-6"	WIOX33	25.87'	



NO. OF LIGHT FIXTURES	FIXTURE SPACING	PHOTOMETRIC CURVE	WATT	VOLTAGE

COPY SPACE	P	A	Y	M	E	N	T	S	A	C	C	E	P	T	E	D	L		
16	7.4	9.1	10.1	10.2	7.9	8.3	7	6.8	10	9.8	8.8	9	7.9	7.4	7.7	7.9	6.8	15.9	142.1
COPY SPACE																			
COPY SPACE																			
COPY SPACE																			
COPY SPACE																			
COPY SPACE																			
COPY SPACE																			
COPY SPACE																			
COPY SPACE																			

SIGN NAME	THEA-INTI	QTY	SIGN NUMBER	STATION(S)	
PANEL	BORDER				
WIDTH	WIDTH				
HEIGHT	RADII				
LEGEND	COLOR				
COLOR					
SYMBOL(S)	ANGLE	X	Y	WID	HT
SIGN NUMBER	NUMBER OF POSTS	CLEARANCE Edge Of Land	COLUMN SIZE	LENGTH AVERAGE	

NO. OF LIGHT FIXTURES	FIXTURE SPACING	PHOTOMETRIC CURVE	WATT	VOLTAGE

COPY SPACE	P	A	Y	M	E	N	T	S	A	C	C	E	P	T	E	D	L
COPY SPACE																	
COPY SPACE																	
COPY SPACE																	
COPY SPACE																	
COPY SPACE																	
COPY SPACE																	
COPY SPACE																	
COPY SPACE																	
COPY SPACE																	

SIGN NAME	THEA-INTI	QTY	SIGN NUMBER	STATION(S)	
PANEL	BORDER				
WIDTH	WIDTH				
HEIGHT	RADII				
LEGEND	COLOR				
COLOR					
SYMBOL(S)	ANGLE	X	Y	WID	HT
SIGN NUMBER	NUMBER OF POSTS	CLEARANCE Edge Of Land	COLUMN SIZE	LENGTH AVERAGE	

NO. OF LIGHT FIXTURES	FIXTURE SPACING	PHOTOMETRIC CURVE	WATT	VOLTAGE

COPY SPACE																		
COPY SPACE																		
COPY SPACE																		
COPY SPACE																		
COPY SPACE																		
COPY SPACE																		
COPY SPACE																		
COPY SPACE																		
COPY SPACE																		

SIGN NAME	THEA-INTI	QTY	SIGN NUMBER	STATION(S)	
PANEL	BORDER				
WIDTH	WIDTH				
HEIGHT	RADII				
LEGEND	COLOR				
COLOR					
SYMBOL(S)	ANGLE	X	Y	WID	HT
NUMBER	NUMBER OF POSTS	CLEARANCE Edge Of Land	COLUMN SIZE	LENGTH AVERAGE	

NO. OF LIGHT FIXTURES	FIXTURE SPACING	PHOTOMETRIC CURVE	WATT	VOLTAGE

COPY SPACE																		
COPY SPACE																		
COPY SPACE																		
COPY SPACE																		
COPY SPACE																		
COPY SPACE																		
COPY SPACE																		
COPY SPACE																		
COPY SPACE																		

REVISIONS			
DATE	DESCRIPTION	DATE	DESCRIPTION

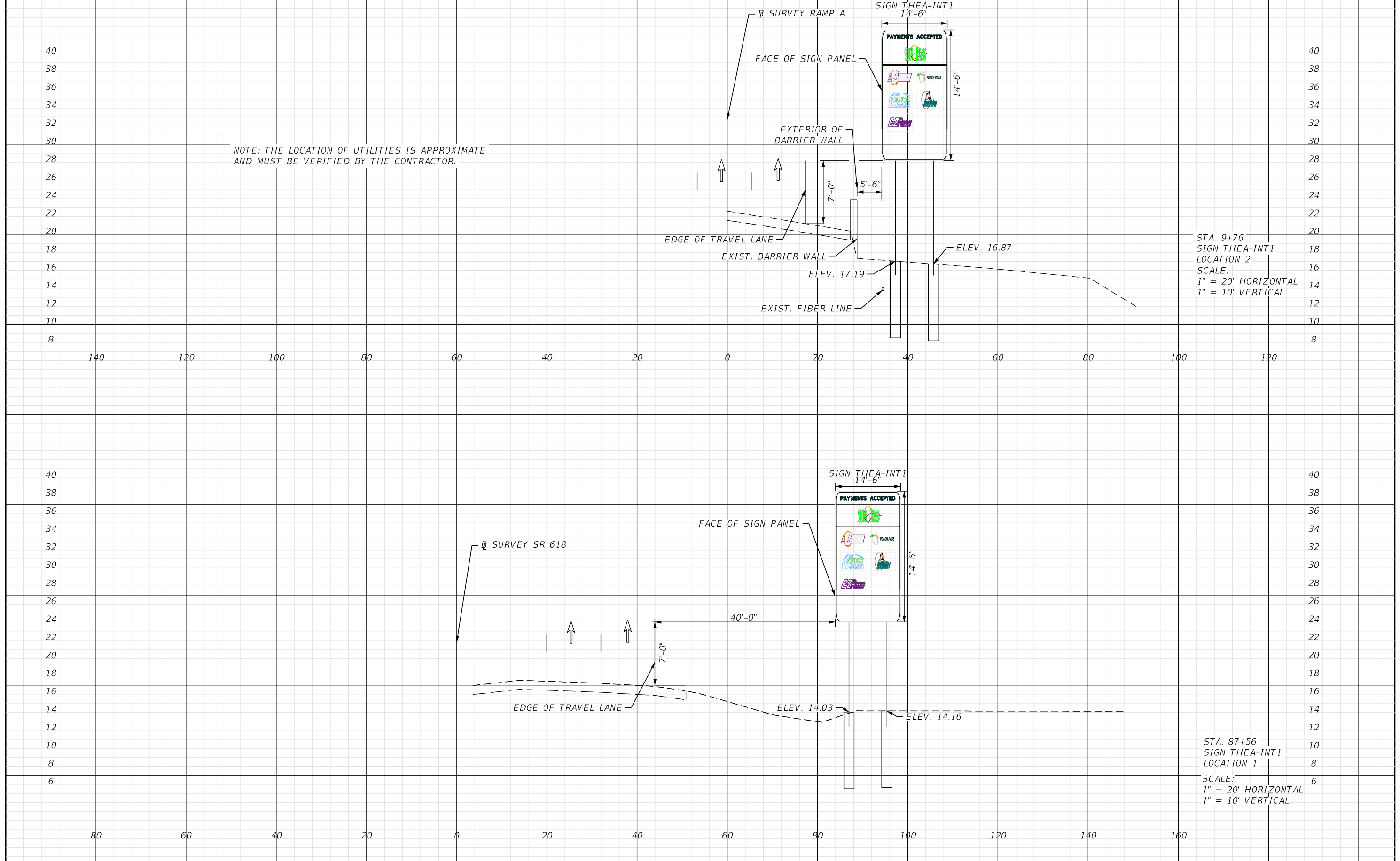
DANIEL HENDRICKSON, P.E.  
P.E. LICENSE NUMBER 76184  
BURGESS & NIPLE, INC.  
10006 N. DALE MABRY HIGHWAY, SUITE 201  
TAMPA, FL 33618

TAMPA-HILLSBOROUGH EXPRESSWAY AUTHORITY		
ROAD NO.	COUNTY	CONTRACT NUMBER
618	HILLSBOROUGH	0-00619-ICG

**GUIDE SIGN WORKSHEET**

SHEET NO.  
10

THE OFFICIAL RECORD OF THIS SHEET IS THE ELECTRONIC FILE DIGITALLY SIGNED AND SEALED UNDER RULE 61G15-23.004, F.A.C.



REVISIONS			
DATE	DESCRIPTION	DATE	DESCRIPTION

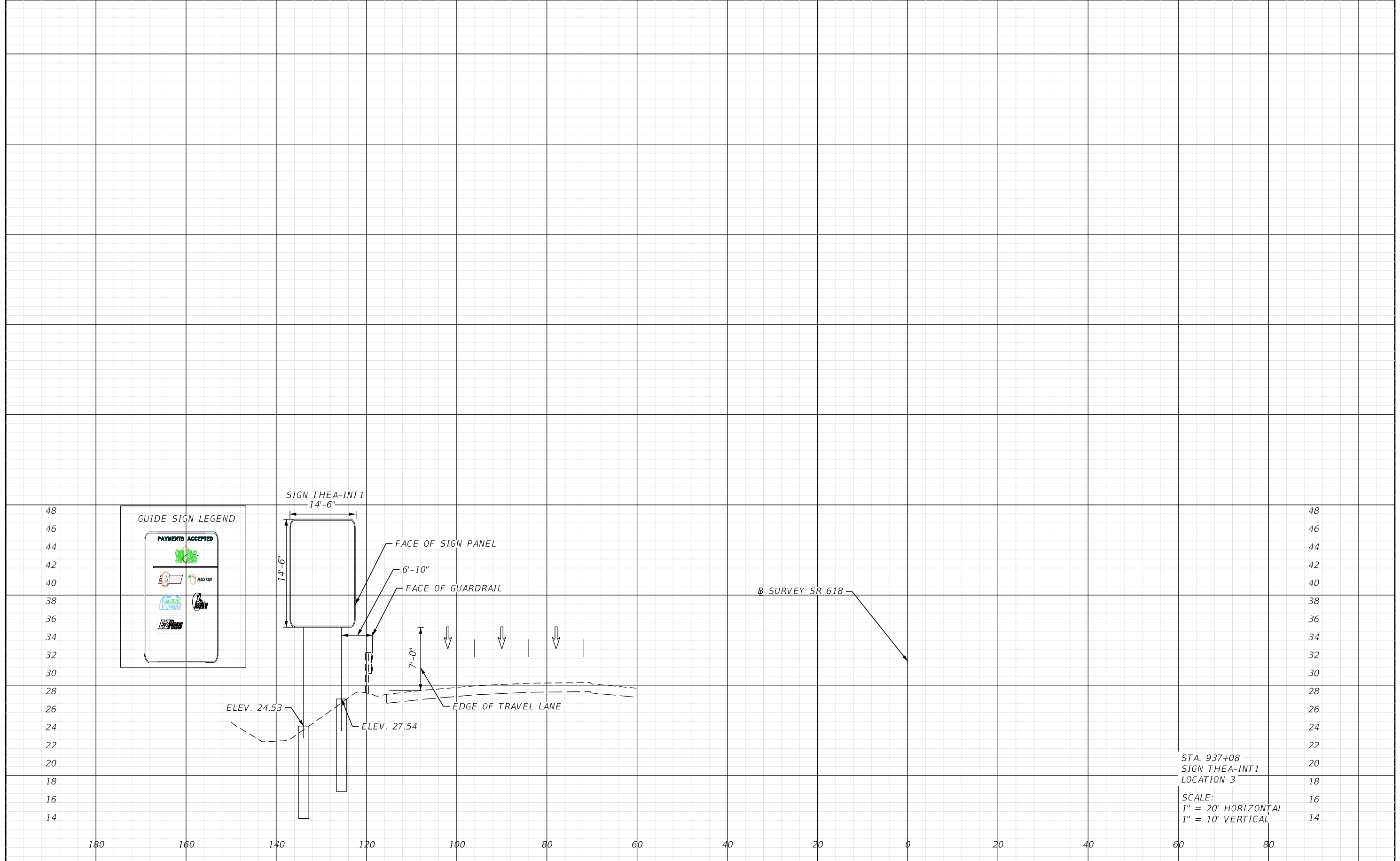
DANIEL HENDRICKSON, P.E.  
P.E. LICENSE NUMBER 76184  
BURGESS & NIPLE, INC.  
10006 N. DALE MABRY HIGHWAY, SUITE 201  
TAMPA, FL 33618

TAMPA-HILLSBOROUGH EXPRESSWAY AUTHORITY		
ROAD NO.	COUNTY	CONTRACT NUMBER
618	HILLSBOROUGH	0-00619-ICG

**SIGN CROSS SECTIONS (1)**

SHEET NO.  
**11**

THE OFFICIAL RECORD OF THIS SHEET IS THE ELECTRONIC FILE DIGITALLY SIGNED AND SEALED UNDER RULE 61G15-23.004, F.A.C.



STA. 937+08  
 SIGN THEA-INT1  
 LOCATION 3  
 SCALE:  
 1" = 20' HORIZONTAL  
 1" = 10' VERTICAL

REVISIONS			
DATE	DESCRIPTION	DATE	DESCRIPTION

DANIEL HENDRICKSON, P.E.  
 P.E. LICENSE NUMBER 76184  
 BURGESS & NIPLE, INC.  
 10006 N. DALE MABRY HIGHWAY, SUITE 201  
 TAMPA, FL 33618

TAMPA-HILLSBOROUGH EXPRESSWAY AUTHORITY		
ROAD NO.	COUNTY	CONTRACT NUMBER
618	HILLSBOROUGH	0-00619-ICG

**SIGN CROSS SECTIONS (2)**

SHEET NO.  
 12

THE OFFICIAL RECORD OF THIS SHEET IS THE ELECTRONIC FILE DIGITALLY SIGNED AND SEALED UNDER RULE 61G15-23.004, F.A.C.