

# Tampa Hillsborough Expressway Authority

**Lee Roy Selmon  
Greenway  
Enhancements  
Design-Build Industry  
Forum  
10/08/2021**



# Introductions

---

**Man Le** – THEA Contracts & Procurement Manager

---

**Judith Villegas, EI** – THEA Project Manager

---

**Sue Chrzan** – THEA Director of Public Affairs and Communications

---

**Brian Pickard, PE** – THEA Director of Operations and Engineering

---

**Anna Quinones, AICP** – THEA Project Manager

---

**Al Stewart, PE** – THEA GEC

---

**Chris Keller, AICP, PLA** – THEA GEC

---

**David Hubbard, PE** – THEA GEC

---

# Project Roles

- **Tampa Hillsborough Expressway Authority (THEA)**- Owner
  - **Judith Villegas, EI**- THEA Project Manager
- **HNTB**- General Engineering Consultant (GEC) to THEA
  - **Tierra**- Geotechnical Consultant to GEC & THEA
  - **Element**- Survey and Utilities Consultant to GEC & THEA

# Agenda

- Project Overview & Objectives
- Public Involvement
- Letter of Interest (LOI)
- Technical Proposal
- Bid Price Proposal
- Qualification Criteria
- Evaluation Process
- Procurement Schedule
- SBE
- DB Stipend
- TRC Members & Technical Advisors
- Project Documents
- Questions



# Project Overview & Objectives

- Low Bid Design-Build Procurement to Enhance a High-Visibility Segment of the Lee Roy Selmon Greenway
  - Base Bid (All work required to complete Phase 1)
  - Plus, any alternatives selected within the available funding (All work required to complete Phase 2)
- Project Limits
  - From Florida Avenue to west of South Jefferson Street
    - **Phase 1** – From Florida Avenue to Morgan Street
    - **Phase 2** – From Morgan Street to Approximately 150 feet west of South Jefferson Street
- *Intent of the Authority to award the contract based on the **lowest responsible, responsive, and qualified bid determined using the base bid (all work required to complete Phase 1) plus any alternates selected within the available funding (all work required to complete Phase 2).***

# Project Overview & Objectives (Cont'd)

- Concept plans included as reference documents
  - Considered preliminary
  - Basis of general design for improvements
  - Minimum aesthetic level expected by THEA

**CONSTRUCTION DOCUMENTS  
FOR  
SELMON EXPRESSWAY GREENWAY IMPROVEMENTS  
TAMPA HILLSBOROUGH COUNTY EXPRESSWAY AUTHORITY: PROJECT # P - 00910 - HK  
CITY OF TAMPA, FLORIDA  
BASE BID PLANS**

SHEET NO.	SHEET DESCRIPTION
C 001-002	SIGNATURE PAGE
C 003	SUMMARY OF ITEMS
C 004	PROJECT SHEET LAYOUT
C 101-102	EXISTING CONDITIONS
C 103-107	EROSION AND SEDIMENT CONTROL PLANS
C 108-109	EROSION AND SEDIMENT CONTROL DETAILS
C 201-205	DEMOLITION PLANS
C 206-207	EXISTING SIGN INVENTORY
H 100-104	LANDSCAPE SITE PLANS
H 105-107	LANDSCAPE DETAILS
H 108	SEATWALL DETAILS
H 109	SEATWALL LAYOUT
H 154-155	ROADWAY COLUMN LIGHTING ATTACHMENT DETAILS
H 156	INDIVIDUAL LIGHT COLUMN DETAIL
H 157	SEMI DETAIL
H 158-159	FUTURE SIGN LOCATION DETAILS
S 100-101	INDIVIDUAL LIGHT COLUMN STRUCTURAL DETAILS
S 102	INDIVIDUAL LIGHT COLUMN STRUCTURAL NOTES
L 100-104	LANDSCAPE PLANS
L 105	LANDSCAPE SCHEDULE & DETAILS
L 106-107	LANDSCAPE DETAILS
L 150-153	LANDSCAPE NOTES
C 201-205	LAYOUT & GEOMETRY PLANS
C 206	VEHICLE TRACKING EXHIBIT
C 401-405	CHANNEL & DRAINAGE
C 407-409	CROSS SECTION LAYOUT PLAN
E 101-105	CROSS SECTION LIGHTING PLANS
E 106	PROTYPING TEST LIGHTING PLANS
E 107	PROTYPING TEST LIGHTING DETAILS
E 108	PROTYPING TEST LIGHTING CALCULATIONS
E 201-205	ELECTRICAL PLANS
E 206	ELECTRICAL NOTES
E 200-203	LIGHTING DETAILS
IR 100-104	IRRIGATION PLANS
IR 105	IRRIGATION SCHEDULE
IR 106-107	IRRIGATION NOTES
IR 108-109	IRRIGATION DETAILS

THEA PROJECT MANAGER: ANNA QUINCKES

NOTE: THE SCALE OF THESE PLANS MAY HAVE CHANGED DUE TO REPRODUCTION.

BID PLANS  
September 21

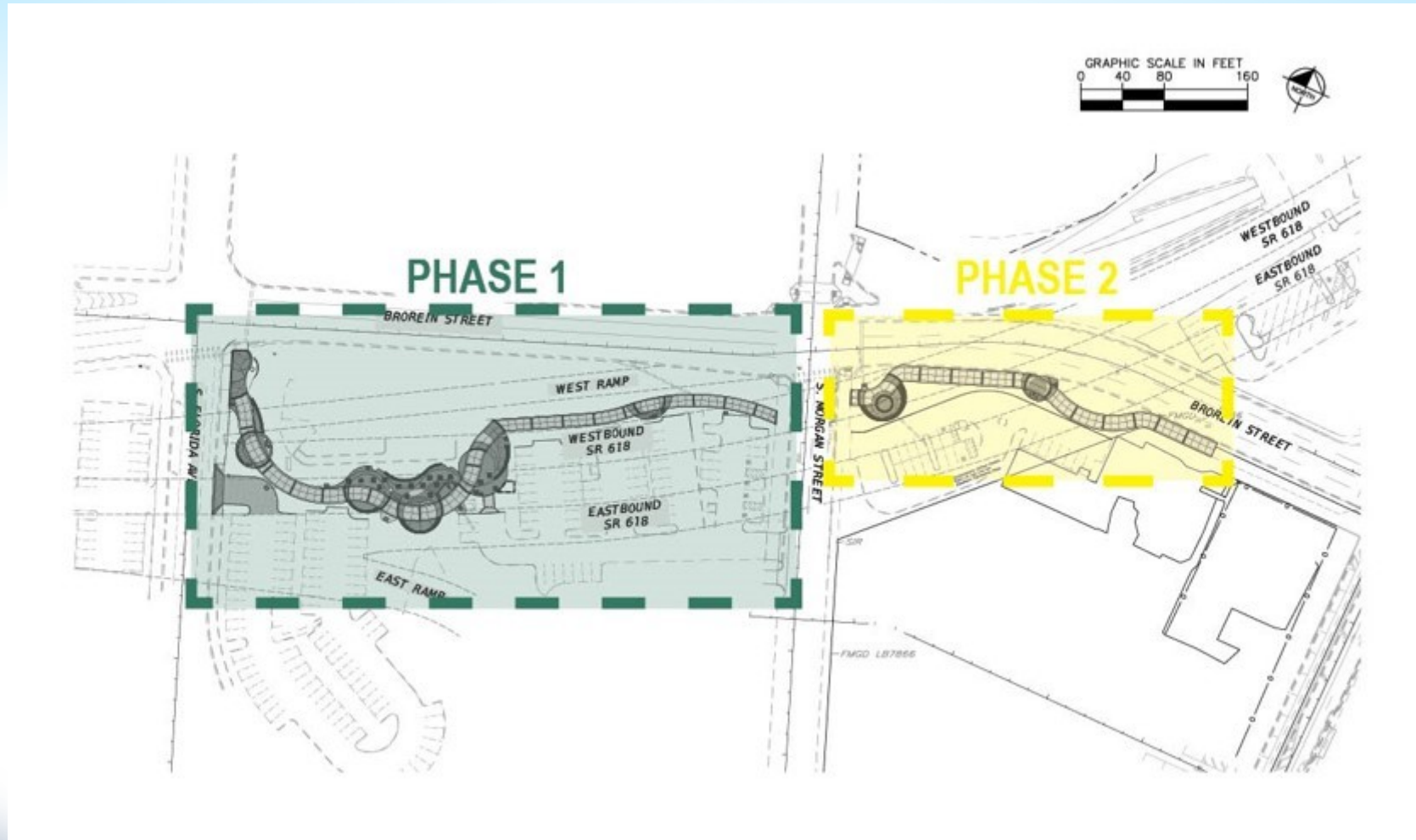
# Project Overview & Objectives (Cont'd)

- Design-Build firm shall address and be in responsible charge of all design and construction efforts, including but not limited to:
  - Surveying
  - Utilities
  - Traffic Control
  - Permitting
  - Grading and Drainage
  - Lighting (Pedestrian and Aesthetic)
  - Hardscape, Color Schemes, & Themed Furnishings
  - Landscaping Aesthetics, Establishment and Survivability
  - Constructability
  - Maintainability of completed project
  - Must utilize sustainable, recycled, and locally sourced materials

# Project Goals

- Aesthetically enhance the Lee Roy Selmon Greenway within the project limits to be consistent with the Selmon Greenway Enhancement Master Plan as well as recent area improvements including the Water Street Development and the USF Medical School building.
- Enhance pedestrian safety within the project limits.
- Provide positive drainage ensuring no standing water within pavement areas
- Minimize the inconvenience during construction to the travelling public, including pedestrians, bicyclists, and vehicular traffic.
- Maintain direct access during construction to adjacent properties to the maximum extent practical.
- Coordinate with adjacent construction projects and maintaining agencies.
- Utilize sustainable, recycled, and locally sourced materials.

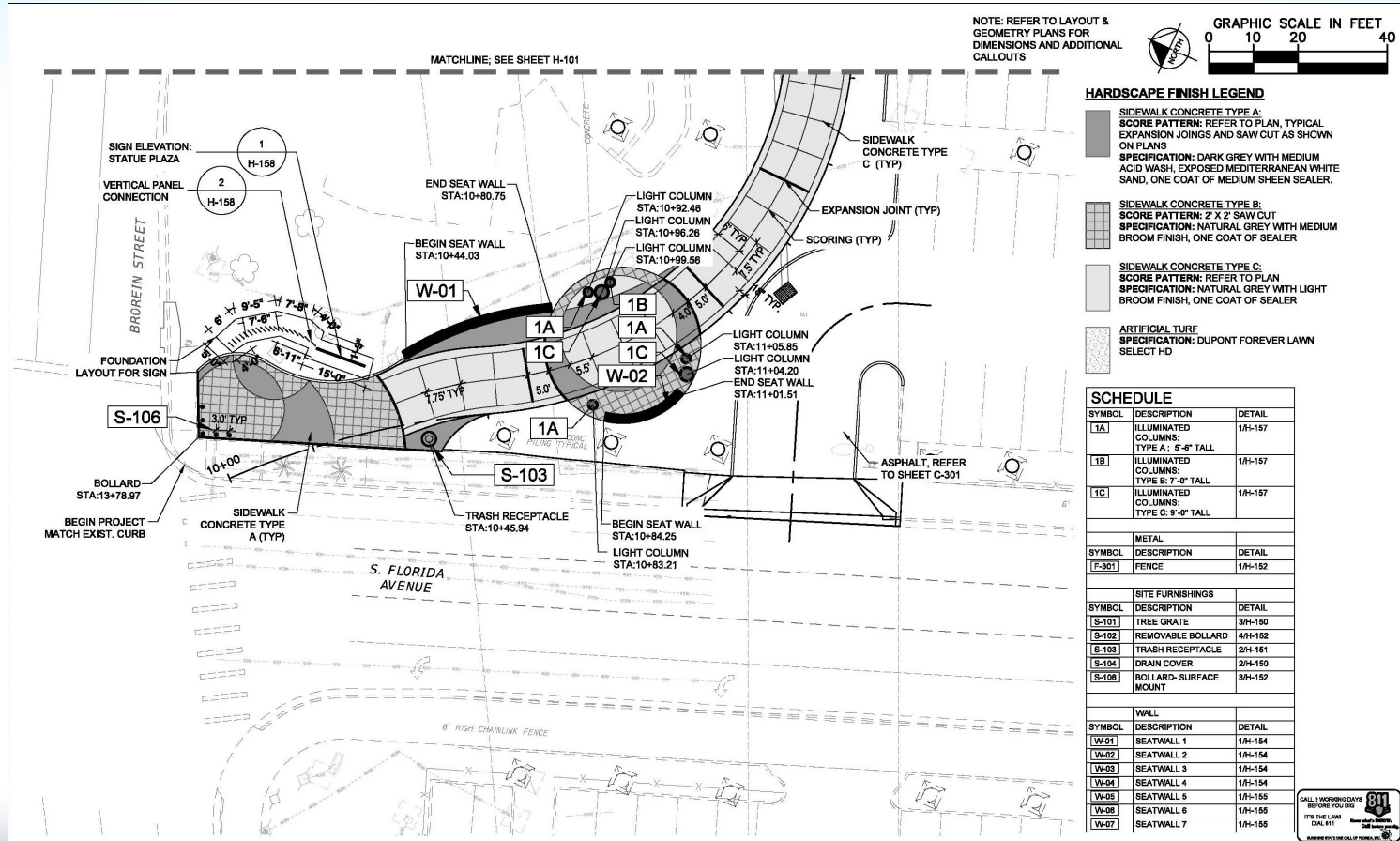
# Project Limits – Phase 1 and Phase 2



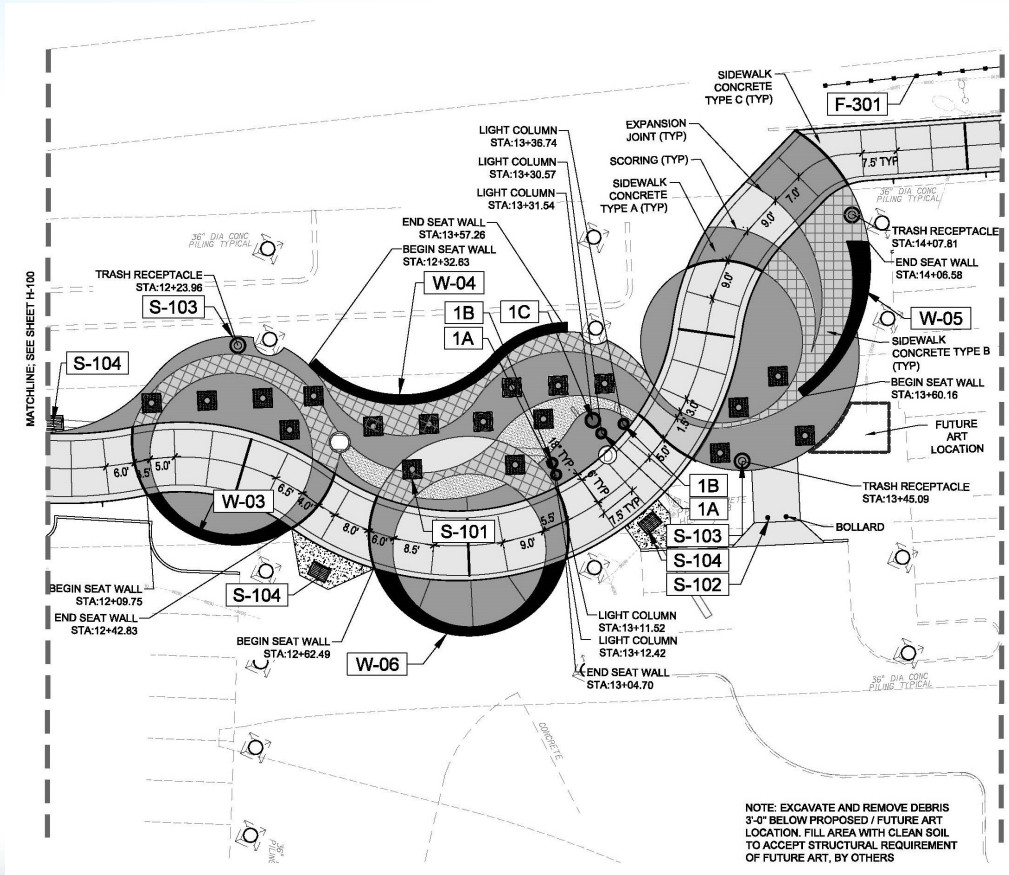
# Phase 1 – Florida Ave. to Morgan Street (Base Bid)

- Enhance/Highlight existing statue of Lee Roy Selmon
- Replace existing trail with decorative concrete
- Design and construction of three (3) plazas
- Landscape plantings, irrigation,
- Decorative and pedestrian lighting
- Custom themed furnishings
- Electrical and audio-visual connections
- Provisions for future artwork

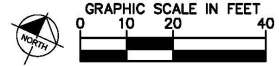
# Phase 1 – Florida Ave. to Morgan Street (Base Bid)



# Phase 1 – Florida Ave. to Morgan Street (Base Bid)



NOTE: REFER TO LAYOUT & GEOMETRY PLANS FOR DIMENSIONS AND ADDITIONAL CALLOUTS



### HARDSCAPE FINISH LEGEND

- SIDEWALK CONCRETE TYPE A:**  
SCORE PATTERN: REFER TO PLAN, TYPICAL  
EXPANSION JOINGS AND SAW CUT AS SHOWN ON PLANS  
SPECIFICATION: DARK GREY WITH MEDIUM ACID WASH, EXPOSED MEDITERRANEAN WHITE SAND, ONE COAT OF MEDIUM SHEEN SEALER.
- SIDEWALK CONCRETE TYPE B:**  
SCORE PATTERN: 2" X 2" SAW CUT  
SPECIFICATION: NATURAL GREY WITH MEDIUM BROOM FINISH, ONE COAT OF SEALER
- SIDEWALK CONCRETE TYPE C:**  
SCORE PATTERN: REFER TO PLAN  
SPECIFICATION: NATURAL GREY WITH LIGHT BROOM FINISH, ONE COAT OF SEALER
- ARTIFICIAL TURF**  
SPECIFICATION: DUPONT FOREVER LAWN SELECT HD

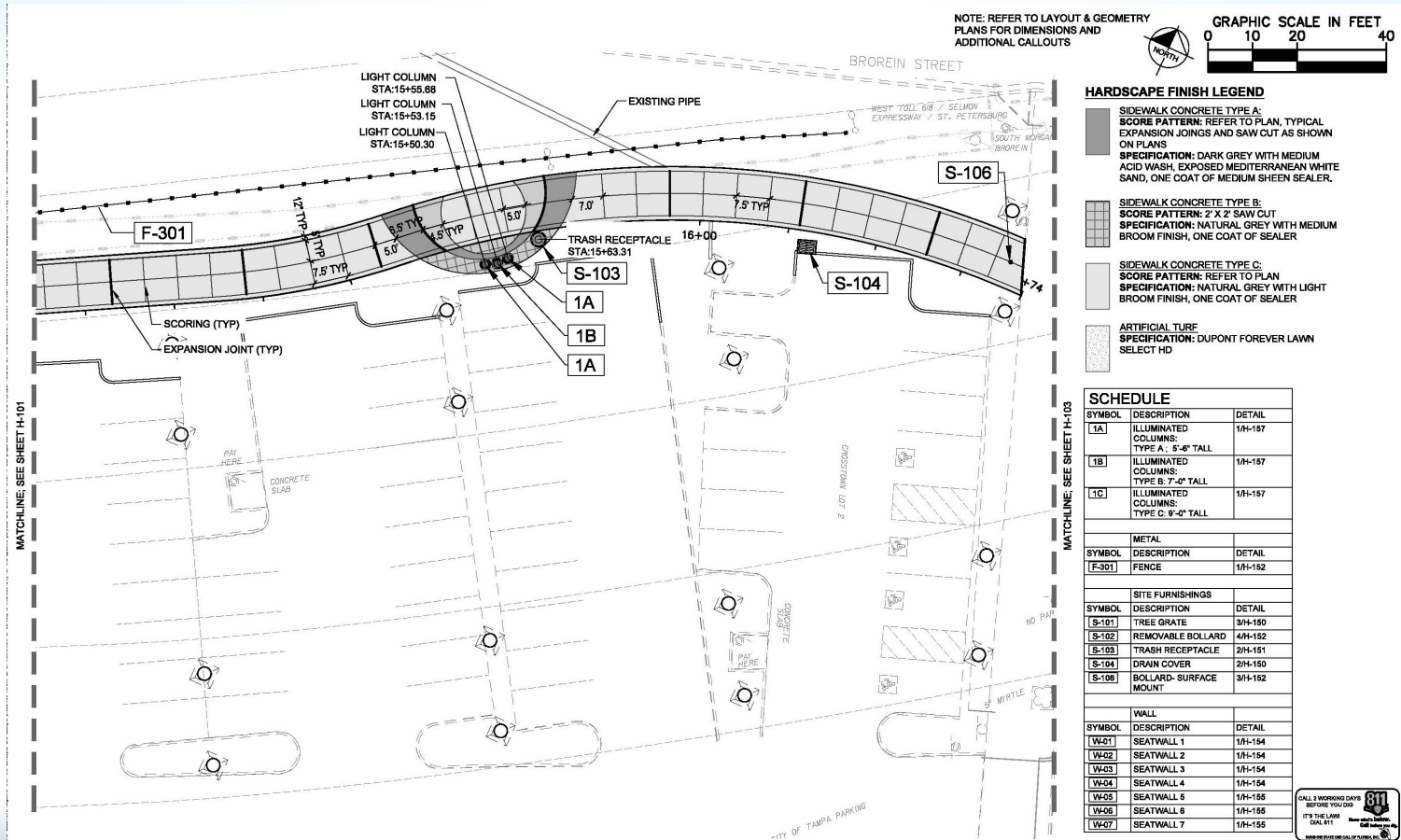
### SCHEDULE

SYMBOL	DESCRIPTION	DETAIL
1A	ILLUMINATED COLUMNS: TYPE A: 5'-6" TALL	1/4-157
1B	ILLUMINATED COLUMNS: TYPE B: 7'-0" TALL	1/4-157
1C	ILLUMINATED COLUMNS: TYPE C: 9'-0" TALL	1/4-157
METAL		
SYMBOL	DESCRIPTION	DETAIL
F-301	FENCE	1/4-152
SITE FURNISHINGS		
SYMBOL	DESCRIPTION	DETAIL
S-101	TREE GRATE	3/4-150
S-102	REMOVABLE BOLLARD	4/4-152
S-103	TRASH RECEPTACLE	2/4-151
S-104	DRAIN COVER	2/4-150
S-106	BOLLARD-SURFACE MOUNT	3/4-152
WALL		
SYMBOL	DESCRIPTION	DETAIL
W-01	SEATWALL 1	1/4-154
W-02	SEATWALL 2	1/4-154
W-03	SEATWALL 3	1/4-154
W-04	SEATWALL 4	1/4-154
W-05	SEATWALL 5	1/4-155
W-06	SEATWALL 6	1/4-155
W-07	SEATWALL 7	1/4-155

NOTE: EXCAVATE AND REMOVE DEBRIS 3'-0" BELOW PROPOSED / FUTURE ART LOCATION. FILL AREA WITH CLEAN SOIL TO ACCEPT STRUCTURAL REQUIREMENT OF FUTURE ART, BY OTHERS



# Phase 1 – Florida Ave. to Morgan Street (Base Bid)



# Phase 1 – Florida Ave. to Morgan Street (Base Bid)



Aesthetic features (hardscape, landscape, lighting, color choices, etc.) shown in the Concept Plans are suggestions only. The Design-Build Team should develop their own design and recommendations.



# Phase 1 – Florida Ave. to Morgan Street (Base Bid)



# Phase 1 – Florida Ave. to Morgan Street (Base Bid)



# Phase 2 – Morgan Street to W. of Jefferson Street

(Bid Alternate)

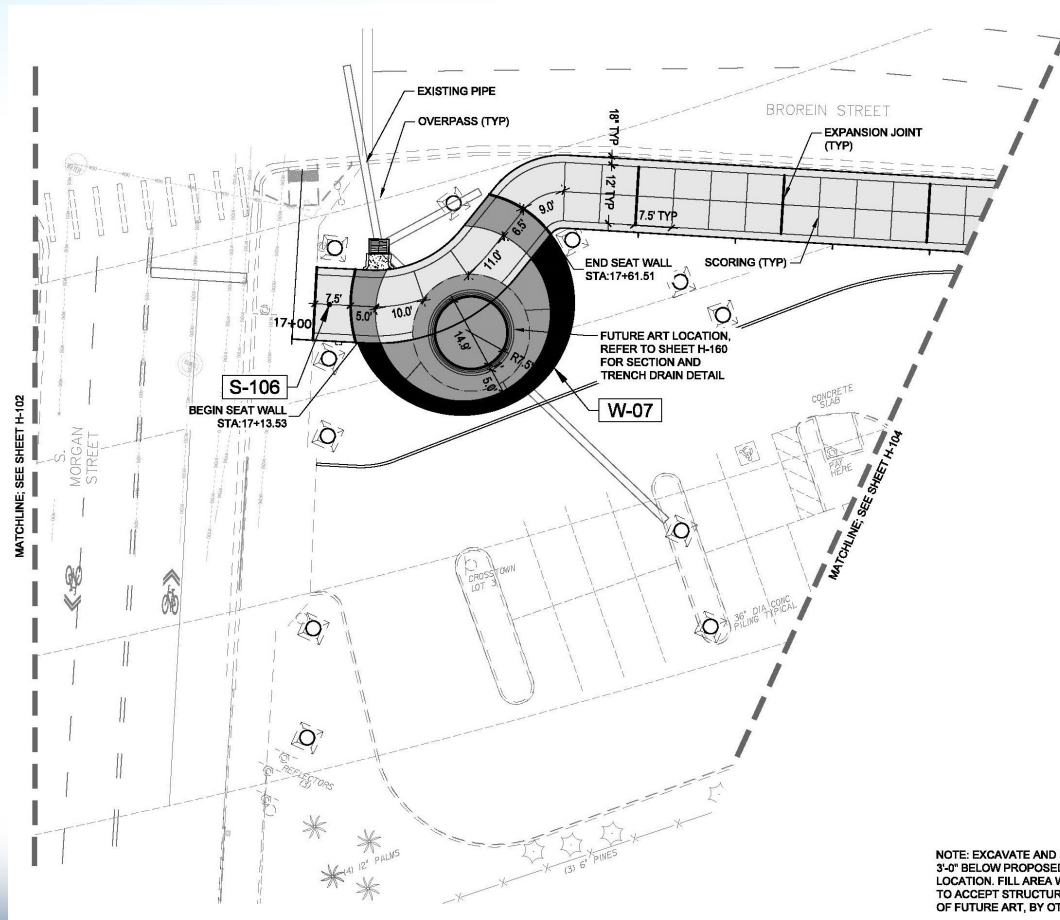
***Subject to available funding***

*Intent of the Authority to award the contract based on the lowest responsible, responsive, and qualified bid determined using the base bid (all work required to complete Phase 1) plus any alternates selected within the available funding (all work required to complete Phase 2).*

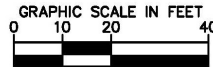
# Phase 2 – Morgan Street to W. of Jefferson Street (Bid Alternate)

- Replace existing trail with decorative concrete
- Design and construction of two (2) plazas
- Landscape plantings, irrigation,
- Decorative and pedestrian lighting
- Custom themed furnishings
- Electrical and audio-visual connections
- Provisions for future artwork

# Phase 2 – Morgan Street to W. of Jefferson Street Street (Bid Alternate)



NOTE: REFER TO LAYOUT & GEOMETRY PLANS FOR DIMENSIONS AND ADDITIONAL CALLOUTS



- HARDSCAPE FINISH LEGEND**
- SIDEWALK CONCRETE TYPE A:**  
SCORE PATTERN: REFER TO PLAN, TYPICAL  
EXPANSION JOINGS AND SAW CUT AS SHOWN ON PLANS  
SPECIFICATION: DARK GREY WITH MEDIUM ACID WASH, EXPOSED MEDITERRANEAN WHITE SAND, ONE COAT OF MEDIUM SHEEN SEALER.
  - SIDEWALK CONCRETE TYPE B:**  
SCORE PATTERN: 2 X 2 SAW CUT  
SPECIFICATION: NATURAL GREY WITH MEDIUM BROOM FINISH, ONE COAT OF SEALER
  - SIDEWALK CONCRETE TYPE C:**  
SCORE PATTERN: REFER TO PLAN  
SPECIFICATION: NATURAL GREY WITH LIGHT BROOM FINISH, ONE COAT OF SEALER
  - ARTIFICIAL TURF:**  
SPECIFICATION: DUPONT FOREVER LAWN SELECT HD

**SCHEDULE**

SYMBOL	DESCRIPTION	DETAIL
1A	ILLUMINATED COLUMNS TYPE A: 5'-6" TALL	1/H-157
1B	ILLUMINATED COLUMNS TYPE B: 7'-9" TALL	1/H-157
1C	ILLUMINATED COLUMNS TYPE C: 9'-4" TALL	1/H-157
METAL		
SYMBOL	DESCRIPTION	DETAIL
F-301	FENCE	1/H-152
SITE FURNISHINGS		
SYMBOL	DESCRIPTION	DETAIL
S-101	TREE GRATE	3/H-150
S-102	REMOVABLE BOLLARD	4/H-152
S-103	TRASH RECEPTACLE	2/H-151
S-104	DRAIN COVER	2/H-150
S-106	BOLLARD- SURFACE MOUNT	3/H-152
WALL		
SYMBOL	DESCRIPTION	DETAIL
W-01	SEATWALL 1	1/H-154
W-02	SEATWALL 2	1/H-154
W-03	SEATWALL 3	1/H-154
W-04	SEATWALL 4	1/H-154
W-05	SEATWALL 5	1/H-155
W-06	SEATWALL 6	1/H-155
W-07	SEATWALL 7	1/H-155

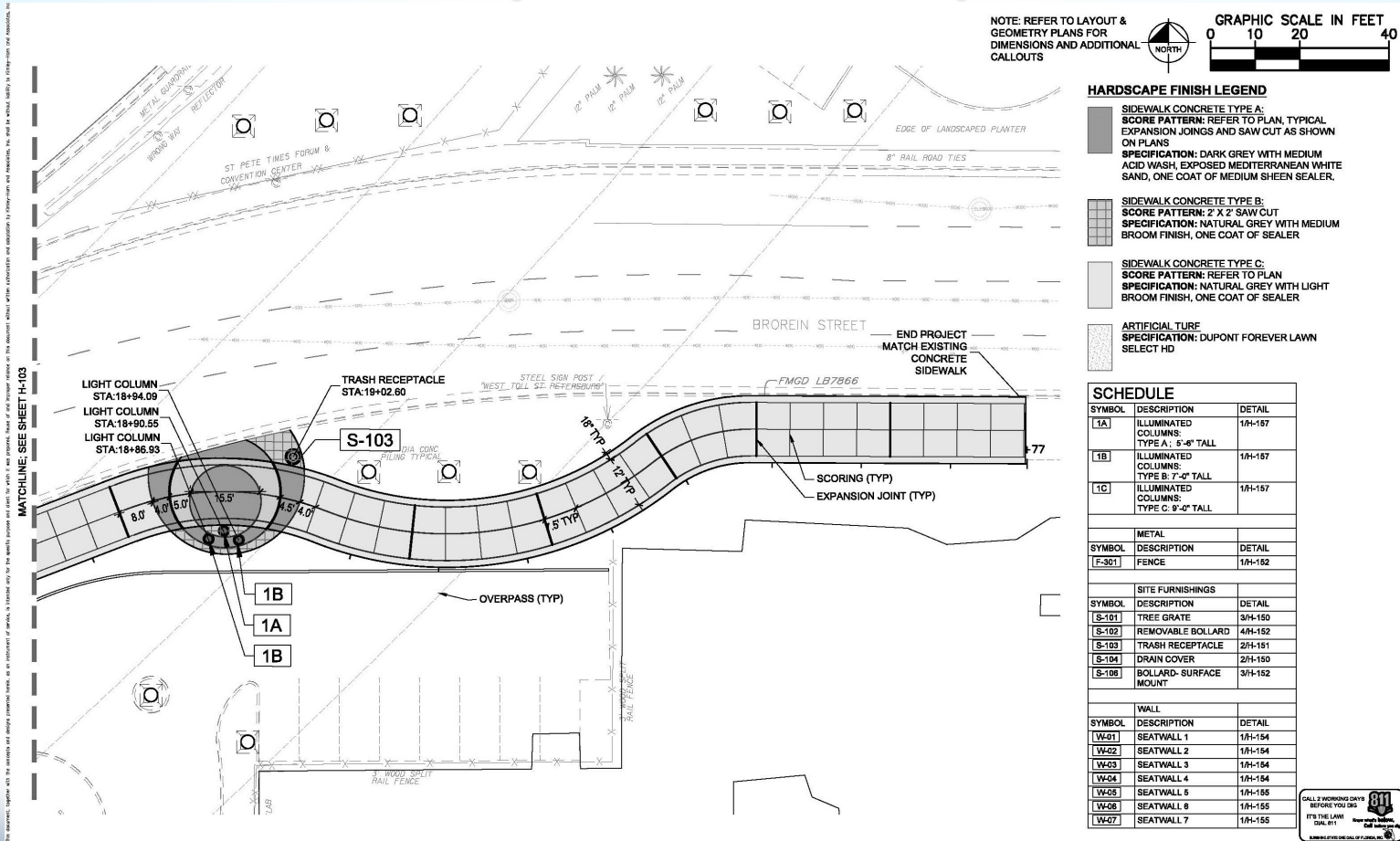
NOTE: EXCAVATE AND REMOVE DEBRIS 3'-0" BELOW PROPOSED / FUTURE ART LOCATION. FILL AREA WITH CLEAN SOIL TO ACCEPT STRUCTURAL REQUIREMENT OF FUTURE ART, BY OTHERS



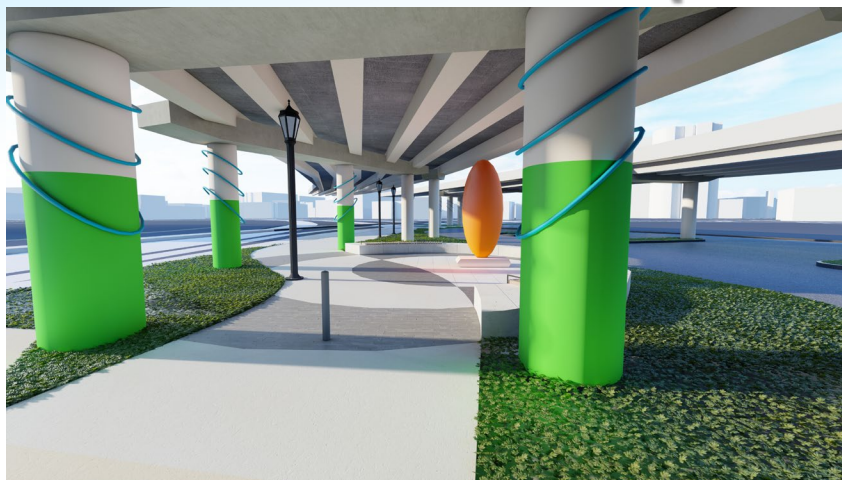
# Phase 2 – Morgan Street to W. of Jefferson Street

## Street

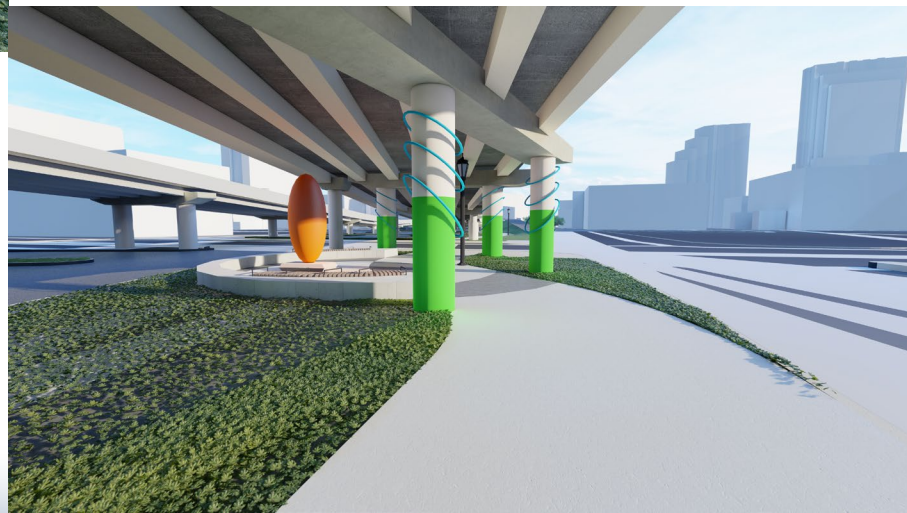
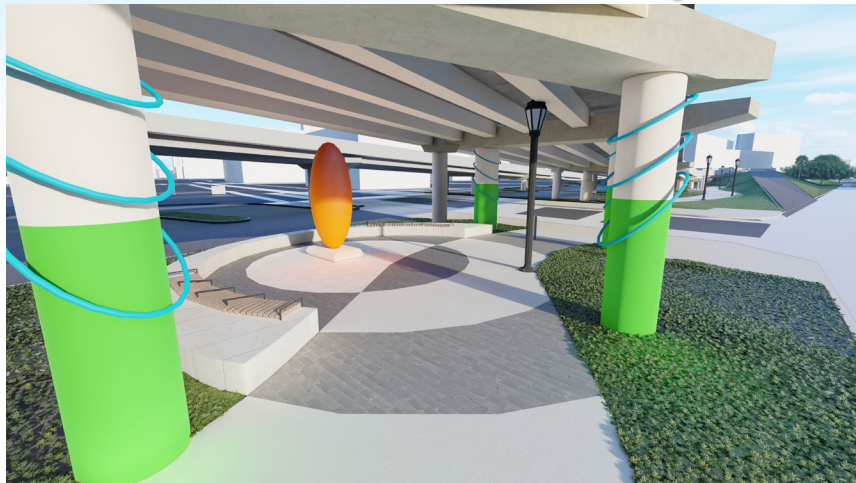
### (Bid Alternate)



# Phase 2 – Morgan Street to W. of Jefferson Street (Bid Alternate)



# Phase 2 – Morgan Street to W. of Jefferson Street (Bid Alternate)



# Public Involvement

- THEA Communications Project Manager (CPM) will-
  - Send Out Lane Closure Notifications (if necessary)
  - Provide Project Updates on THEA's Website
  - Post Updates on Social Media
- Design Build Team will Coordinate with CPM
- Design Build Team may Attend Meetings with the Public to Provide Quick Response to the CPM to Address Construction Issues
- Design Build Team will Proactively Report any Interaction with the Public to the CPM
- Design Build Team will Provide Support as needed by CPM

# Letters of Interest (Phase I)


- Maximum of five (5) pages
  - 8 ½" x 11" sheets
  - Minimum font size ten (10)
- Additional items – Not counted in the 5-page limit
  - 11" x 17" Organizational Chart
  - Resumes
  - Three (3) pages of Performance History
- LOI Evaluation Criteria (Maximum of 30 points):
  - Past Performance, D-B Project Experience, Organization & Staffing (10 points)
  - Design-Build Project Requirements and Critical Issues (10 points)
  - Utilization of sustainable, recycled, and locally sourced materials (10 points)
- *LOI Evaluation is for the purpose of Shortlisting Only.*
- Submit electronically in Adobe.pdf format (unzipped) and attached to a single email

# Technical Proposal (Phase II)

- Submit electronically in Adobe.pdf format (unzipped) and attached to a single email
- FDOT Form 700-010-21 Low Bid Design-Build Technical Proposal
  - Approach and Understanding of the Project, Staffing, Responsible Office
  - Two (2) pages maximum, 8.5" x 11", single-sided, typed pages including text, graphics, tables, charts, and photographs
- Proposal Plans
  - Ten (10), single-sided 11" x17" sheets
    - D-B Firm's Concept for entire project limits – Base Bid (Phase 1) and Bid Alternative (Phase 2)
    - Comprehensive site plan, concept details for signs, decorative lighting, trail and plaza paving, concept details for landscaping, material and plant schedule, plaza square footage, linear feet of benches, specialty items, etc.
    - Identification of proposed sustainable, recycled, and locally sourced materials
    - Should clearly demonstrate D-B Firm's design meets or exceeds aesthetic level of Concept Plans

# Bid Price Proposal

- One (1) hard copy Bid Price Proposal shall be hand delivered in separate, sealed package to THEA
  - Bid Price and Calendar Days for Phase 1 (Base Bid)
  - Additional Price and Calendar Days for Phase 2 (Bid Alternate)
  - Initial Schedules of Values/Anticipated Payment Schedules

 TAMPA-HILLSBOROUGH COUNTY EXPRESSWAY AUTHORITY  
**BID PROPOSAL FORM**  
LEE ROY SELMON GREENWAY ENHANCEMENTS

MODIFIED FORM 375-020-17  
CONTRACTS ADMINISTRATION  
THEA - 06/17

Let by: Tampa-Hillsborough County Expressway Authority

\_\_\_\_\_  
(Name of Bidder. Note: Void if used by any bidder other than one this Form issued to)

TAMPA-HILLSBOROUGH EXPRESSWAY AUTHORITY (THEA) PROJECT NO.: \_\_\_\_\_  
THEA CONTRACT NO.: \_\_\_\_\_  
DATE OF BID PROPOSAL: \_\_\_\_\_  
DATE BIDS DUE: \_\_\_\_\_  
DATE OF AWARD: \_\_\_\_\_  
DATE OF CONTRACT EXECUTION: \_\_\_\_\_

1. BASE BID (PHASE 1) PRICE: *(in Words)* \_\_\_\_\_ DOLLARS  
(\$ \_\_\_\_\_)

CONTRACT CALENDAR DAYS (BASE BID): \_\_\_\_\_

2. ALTERNATE: (ALL WORK REQUIRED TO COMPLETE PHASE 2) PRICE: *(in Words)* \_\_\_\_\_ DOLLARS  
ADD \_\_\_\_\_ DOLLARS  
(\$ \_\_\_\_\_)

BASE BID CONTRACT CALENDAR DAYS TO BE INCREASED BY \_\_\_\_\_ CALENDAR DAYS

% Small Business Enterprise Proposed: \_\_\_\_\_

PROPOSAL FOR ABOVE PROJECT(S)

The Bidder's Proposal must meet the requirements and design and construction criteria as stated in the THEA Request for Proposal for the Lee Roy Selmon Greenway Enhancements. Materially unbalanced Bids are subject to rejection.

\_\_\_\_\_

# Qualification Requirements

## Team Pre-Qualifications

### Major work types:

- 7 – Drainage
- 8 – Electrical Work
- 10 – Flexible Paving
- 18 – Landscaping
- 40 - Sidewalk

## Consultant Pre-Qualifications

- 3.1 - Minor Highway Design
- 4.1.1 - Miscellaneous Structures
- 7.1 - Signing, Pavement Marking & Channelization
- 7.2 - Lighting
- 8.1 - Control Surveying
- 8.2 - Design, Right of Way, & Const. Surveying
- 9.1 - Soil Exploration
- 9.2 - Geotechnical Classification Lab Testing
- 9.4.1 - Standard Foundation Studies
- 15 – Landscape Architect

In lieu of FDOT Prequalification, the Design-Build Team may provide documented evidence of completion of 3 similar projects within the last five (5) years.

# Evaluation Process

- Authority opens Bid Price Proposals from shortlisted firms
- THEA TRC reviews the Technical Proposal of Lowest Bidder for Responsiveness based on RFP criteria
- If Responsive, D-B Firm will be awarded project
- If Non-Responsive, TRC will review Technical Proposal of next Lowest Bidder for Responsiveness or Non-Responsiveness based on the RFP, and so on.

# Procurement Schedule

October 8, 2021	Industry Forum
<b>October 15, 2021</b>	<b>Advertisement</b>
October 22, 2021	Mandatory Pre-Proposal (In-Person & Virtual) Meeting
October 25, 2021	Deadline for Questions/Request for Clarification
October 29, 2021	Addendum Release (if required)
<b>November 3, 2021</b>	<b>Letters of Interest Due</b>
November 8, 2021	TRC Meets to Evaluate LOIs & Shortlist
November 15, , 2021	THEA Board Meeting to approve Shortlist
<b>November 16, 2021</b>	<b>Posting of Board Approval of Shortlisted Firms</b>
November 17, 2021	Deadline for Shortlisted Firms to Declare Intent to Continue
November 23, 2021	Deadline for submittals for request for Design Exceptions or Design Variations

# Procurement Schedule

December 10, 2021	Deadline for Submittal of Questions
December 17, 2021	Deadline for Authority to post Responses to Questions
<b>January 7, 2022</b>	<b>Technical Proposals &amp; Bid Price Proposals Due</b>
January 10, 2022	Meeting of TRC to determine Responsiveness of Technical Proposal
January 24, 2022	THEA Board Meeting to Determine Intended Award
January 28, 2022	Anticipated Award Date
January 31, 2022	Anticipated Execution Date

# SBE

THEA's Small Business Enterprise (SBE) Policy requires nondiscrimination on the basis of race, color, national origin, and gender in its employment and contracting practices and encourages the solicitation and utilization of SBE's. This means that the Authority's goal is to spend a portion of the highway dollars with Certified SBE's as prime Design-Build Firms or as subcontractors. Race-neutral means that the Authority believes that the overall goal can be achieved through the normal competitive procurement process. THEA has exceeded 15% SBE participation on its program for the last several years.

# DB Stipend

- \$15,000 per non-selected shortlisted Design-Build Firm that meets the stipend eligibility requirements including submittals of written technical proposal and price proposal
- Design-Build Firm must fully execute with original signatures and have delivered to the Authority within one (1) week after the Short-List protest period, four (4) originals of the Design-Build Stipend Agreement.

# TRC Members and Technical Advisors

- **TRC Members:**

- Judith Villegas, EI – THEA
- Brian Pickard, PE – THEA
- Anna Quinones, EI – THEA

- **Technical Advisors:**

- Sue Chrzan – THEA
- Jim Drapp, PE – THEA GEC
- Al Stewart, PE – THEA GEC
- Christopher Keller, AICP, PLA – THEA GEC
- David Hubbard, PE – THEA GEC
- Peter Rogas, PE – THEA GEC
- CEI – To be determined



# Project Documents

<http://www.tampa-xway.com/procurement/#>

The **cone of silence** remains in place for all THEA, HNTB, Tierra, Element, and Kimley-Horn staff. The cone of silence begins on date of advertisement and ends upon Board Approval.

All questions should be emailed to Man Le, THEA Contracts & Procurement Manager: [man.le@tampa-xway.com](mailto:man.le@tampa-xway.com)

Answers will be posted on the THEA website and Demandstar



All questions should be emailed  
to Man Le, THEA Contracts &  
Procurement Manager:  
[man.le@tampa-xway.com](mailto:man.le@tampa-xway.com)